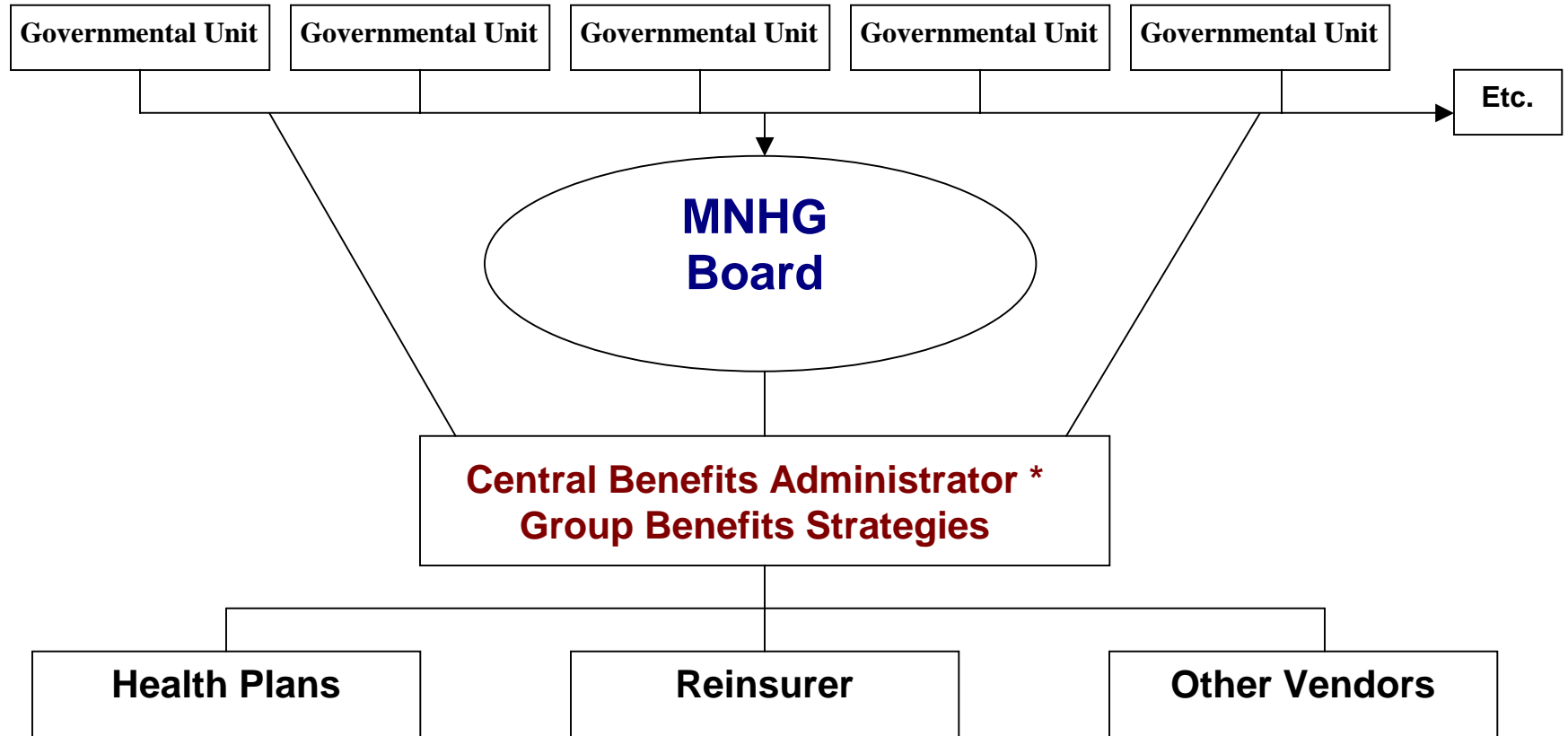


Minuteman Nashoba Health Group

Operational Model

Participants



* **Central Benefits Administrator Functions:** Enrollment Processing to Vendors, Trust Fund Billing to Govt. Units, Processing Invoices, Liaison with Treasurer, Consulting, Underwriting, Reporting, Claims Auditing & Recovery, Administrative Support to Board & Committees, Communications, COBRA Administration